



Technical Packet



SPECTRA
BY COMCAST SPECTACOR

Tony's Pizza Events Center • 800 The Midway • Salina, KS 67401
(P) 785-826-7200 • (F) 785-826-7207
www.TonysPizzaEventsCenter.com

Facility Personnel

General Manager
Susan Trafton
Susan_Trafton@comcastspectacor.com

Director of Finance
Crystal-Ann Machinjili
CrystalAnn_Machinjili@comcastspectacor.com

Director of Marketing
Marjie Anderson
Marjorie_Anderson2comcastspectacor.com

Director of Operations
Mike Highsmith
mike_highsmith@comcastspectacor.com

Director of Food & Beverage
Alan Davis
alan_davis@comcastspectacor.com

Food & Beverage Manager
Christopher Cadle
Christopher_Cadle@comcastspectacor.com

Box Office Manager
Marideth Highsmith
marideth_highsmith@comcastspectacor.com

Sales Manager
Lee Gallion
lee_gallion@comcastspectacor.com

Event Manager
Derrick Young
Derrick_Young@comcastspectacor.com

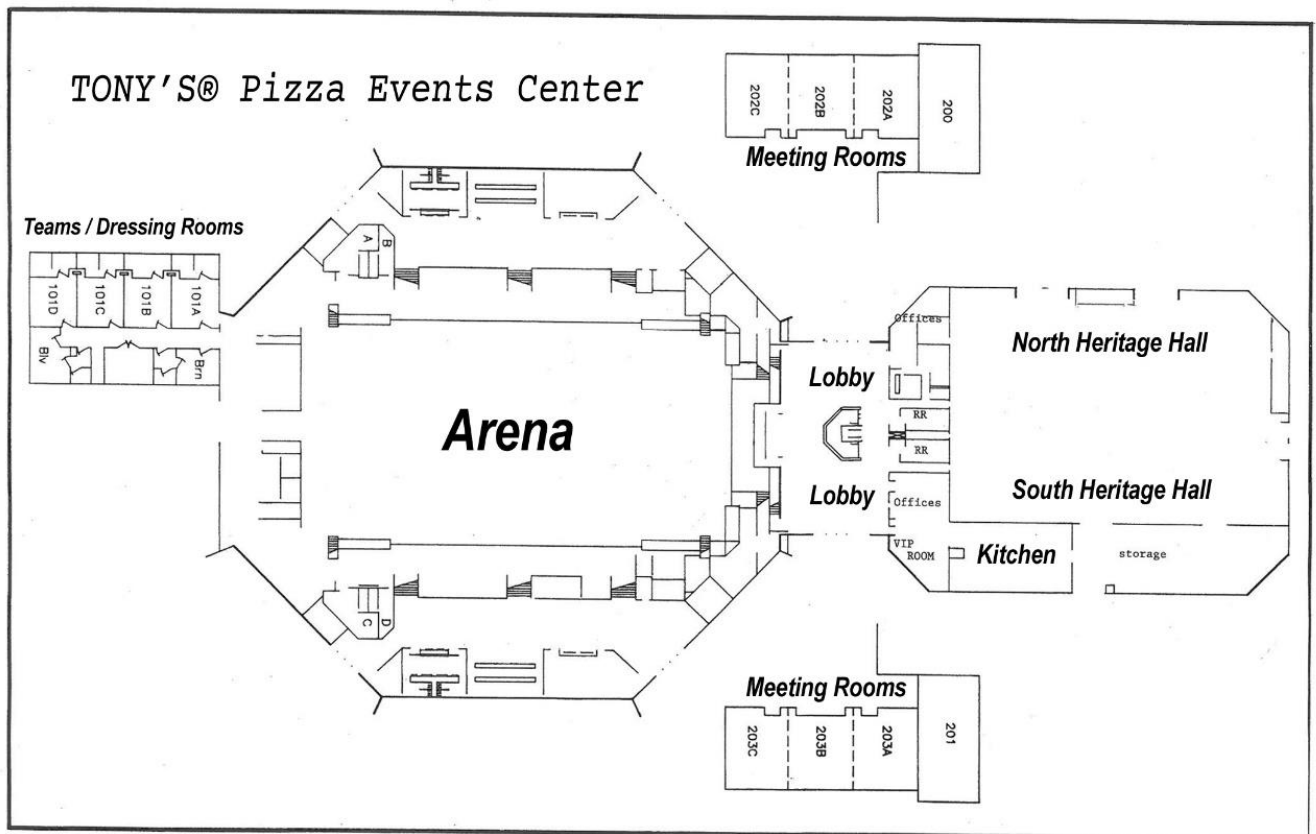
Operations Manager
Keith Hall
keith_hall@comcastspectacor.com

Assistant Box Office Manager / Marketing &
Sales Coordinator
Nick Floyd
nick_floyd@comcastspectacor.com

Facility Description

Tony's® Pizza Events Center, located in Salina, KS is comprised of a 7,357 seat multipurpose arena and Heritage Hall, a newly renovated 25,000+ square foot convention space. Nicknamed *Mid-America's Meeting Place*, the Tony's Pizza Events Center provides central Kansas a place to meet, play and experience events that enhance living in and visiting the City of Salina.

The City of Salina is the primary owner of Tony's Pizza Events Center. Spectra Venue Management (spectraexperiences.com) manages the Tony's Pizza Events Center as well as over 140 other public assembly facilities around the world.



Location & Directions

Salina sits at the crossroads of Interstate 70 and Interstate 135 in Kansas. Tony's Pizza Events Center is located minutes away from the interstate.

From I-70

Exit from I-70 at Ohio Street. Once on Ohio Street, proceed south approximately three (3) miles until you reach The Midway. Make a right (west) onto The Midway and it will lead you directly to Tony's Pizza Events Center.

From I-135

Exit I-135 at Crawford St. From there go east approximately 2.5 miles to Ohio Street. Turn left (north) and proceed almost a mile to The Midway. Turn left on The Midway and it will lead you directly to Tony's Pizza Events Center.

Parking

Almost 3,700 parking spaces surround Tony's Pizza Events Center with additional parking available in the city parks adjacent to the building



World-Class entertainment has graced the stage of Tony's Pizza Events Center including national acts like:

- | | |
|-----------------------|---------------------------------------|
| -Darius Rucker | -Alan Jackson |
| -Disney Live | -The Harlem Globtrotters |
| -Theresa Caputo | -Rascal Flatts |
| -Mannheim Steamroller | -Jeff Foxworthy & Larry the Cable Guy |
| -Blue Man Group | -Beach Boys & The Temptations |



Ticketing

The box office at Tony's Pizza Events Center is fully computerized and powered by Spectra Ticketing & Fan Engagement ticketing software. The ticketing system provides standard and customized promoter reports including ticket audits and settlement reports.

Admission tickets for any event at Tony's Pizza Events Center must be sold through the Tony's Pizza Events Center box office which is fully equipped and staffed on site.

General Information

Tony's Pizza Events Center box office is located outside the north and south entrances of Tony's Pizza Events Center.

Box Office Hours

Monday – Friday 8 a.m. – 5 p.m.

Open at least one (1) hour prior to door opening for a scheduled event.

Accepted Method of Payments

The box office accepts all major credit cards and cash for ticket purchases. The Box Office does not accept checks.

Cancelled or Rescheduled Events

All ticket sales are final. However, refunds will be made available for cancelled events. Customers will automatically be refunded for cancelled events when paying with a credit card. Any other refunds will be handled at point of sale.

Tickets purchased to events that have been postponed will be honored at the new date and time.

Group Sales

For most events, groups of 10 or more will receive a discount to ticketed events. Tony's Pizza Events Center group sales department actively pursues large groups to purchase tickets for certain events at the arena. Through an established list of group sales contacts, a group sales plan can be created to fit almost any event. Tony's Pizza Events Center can offer numerous opportunities to maximize ticket sales through numerous group sales avenues. To contact our group sales department call 785-826-7200.

Support

Tony's Pizza Events Center has an in-house marketing agency to assist promoters with all marketing needs. Whether you need advertising, publicity and promotional assistance, or a-la-carte support, our staff is flexible and will tailor services to your needs.

Salina, KS Marketing Information

- Total Population 47,336
- Median Age 37.1 years old
- Median Household Income \$44,710
- Per Capita Income \$23,425
- Ethnicity
 - White 86.2%
 - African American 3.7%
 - Asian 2.3%
 - Hispanic / Latino 10.7%
 - American Indian / Alaska Native .5%
 - Native Hawaiian & Pacific Islander .01 %
 - Identified by two or more 3.3%
- 3.1% Unemployment Rate
- Television is served from Wichita, KS, but advertising can be purchased locally
 - KWCH (CBS)
 - KAKE (ABC)
 - KSNW (FOX)
 - KSAS (CW)
 - KEUV (Univision)
 - KMTQ (my network TV)
- Salina area radio stations offer some locally produced programming. Eagle Communications & Rocking M Radio are the major groups.
- Salina Journal is the daily newspaper.



Specifications

- Floor: 203' x 104' (21,113 ft.²)
- Ceiling Height 48'6" – Grid Height 43'8"
- Roll-Up Door 14' W x 17'8" H
- 10 Clear Coms
- 6 Spotlights
- LED Instant On/Off Lights

Rigging

- 80,000 lbs. End Stage
 - 100,000 lbs. Center Stage
- New Grid
End Stage: 120,000

Power

- Stage Left: 400 Amp 3 Phase 16 Series Camlock Connection
- Stage Right: 400 Amp 3 Phase 16 Series Camlock Connection
- 600 Amp 3 Phase 17 Series Camlock Connection
- Loading Dock Area: 50 Amp Shore Power

Stage

- 76' wide x 48' deep (3,648 ft.²)
- Risers: (9) 4' x 8' x 8"
- (20) 4' x 8' x 16"
- (10) 4' x 8' x 24"



Dressing Rooms/ Production

- Star A: 18' x 13'6" (full restroom / shower)
- Star B: 20' x 14' (full restroom / shower)
- 140A: 24' x 80' (divided into four rooms at 24'x 20')
- 140B: 21'9" x 13'4" (full restroom / shower)
- 140C: 23'5" x 7' (full restroom / shower)
- 140D: 21'9" x 13'4" (full restroom / shower)

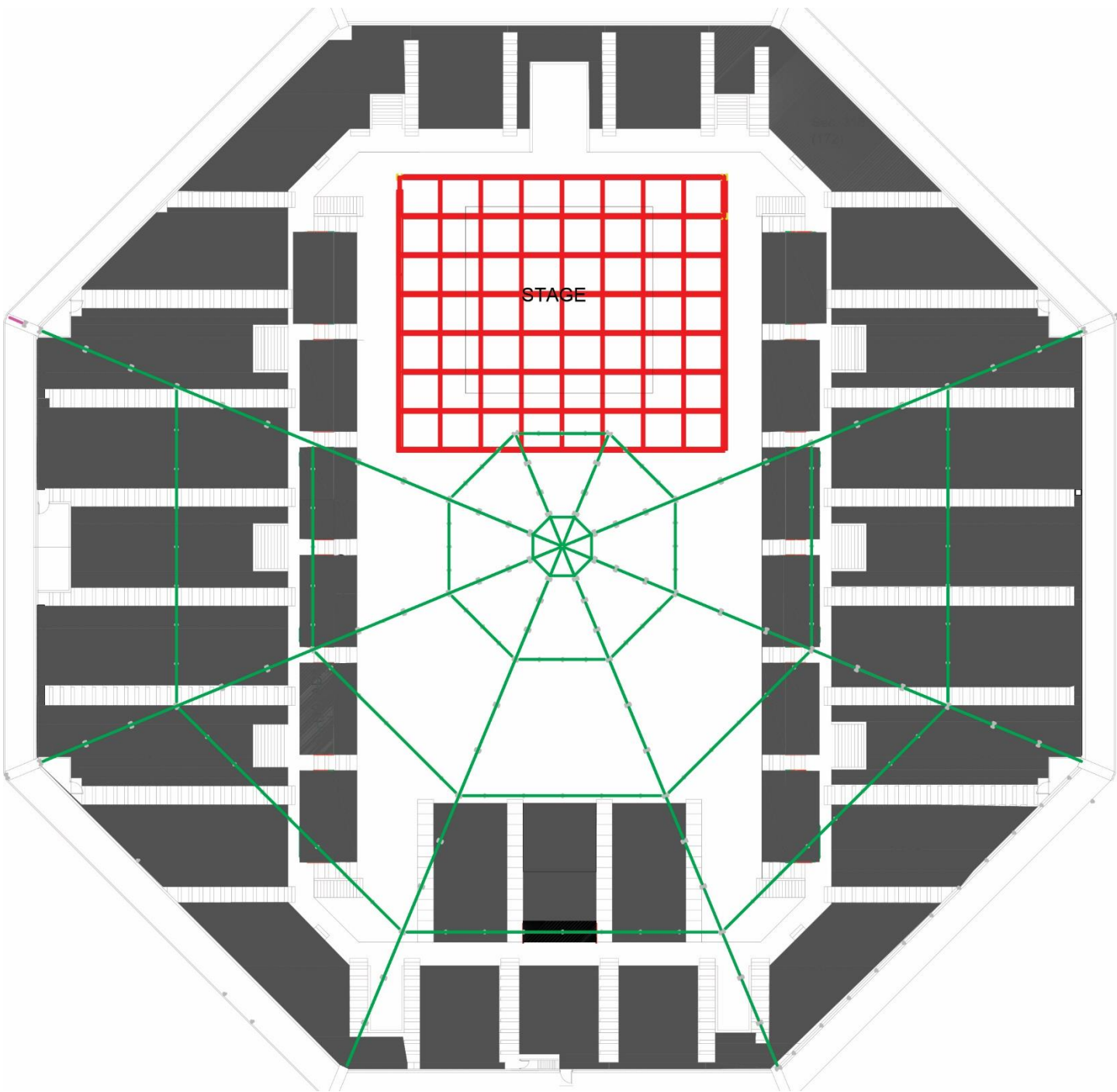
Stagehands

- IATSE Local 464
- Hands, Riggers, Loaders
- Overtime (time and a half) is before 8 a.m. and after midnight. OT for each hand after 8 hours worked.
- Rates available upon request.

Inventory

- 8' Bike Rack Pieces: 46 = 448'
- Concession Stand (2) – North and South Concourse
- (2) Basketball Courts
- (1,900) folding chairs:
- Forklifts
 - (1) 5,000 lb. with 15' lift
 - (1) 2,500 lb. with 9' lift
- Wireless Internet and hard lines available
- Drapery/Soft Goods
- House Curtain 120' x 30'
- In house Washer/Dryer
- Pipe and Drape 400'
- Standard Tables 8' (200)
- Round Tables 5' (125)

Tony's Pizza Events Center Rigging Grid



The multipurpose arena offers a wide range of seating options able to host intimate events for 2,500 or large scale entertainment and sports events for over 6,500. The arena easily converts from an auditorium to sports facility to exhibition hall.

The floor plan shows a large central red area labeled "LAW SCHOOL". To its left is a yellow vertical strip containing rooms Soc. 209 through Soc. 217. To its right is another yellow vertical strip containing rooms Soc. 218 through Soc. 226. Further right are orange rooms Soc. 227 through Soc. 232. At the bottom center are three small red rooms labeled Soc. 233, Soc. 234, and Soc. 235. The entire complex is surrounded by a grey border representing the building's exterior walls.

The floor plan of the 1st floor is an octagonal layout. The central area contains a large circular space with a stage and seating, labeled 'THEATRE' and 'AUDITORIUM'. Surrounding this central area are various rooms, including 'Room 101' through 'Room 110', 'Room 111' through 'Room 115', 'Room 116' through 'Room 120', 'Room 121' through 'Room 125', 'Room 126' through 'Room 130', 'Room 131' through 'Room 135', 'Room 136' through 'Room 140', 'Room 141' through 'Room 145', 'Room 146' through 'Room 150', 'Room 151' through 'Room 155', 'Room 156' through 'Room 160', 'Room 161' through 'Room 165', 'Room 166' through 'Room 170', 'Room 171' through 'Room 175', 'Room 176' through 'Room 180', 'Room 181' through 'Room 185', 'Room 186' through 'Room 190', 'Room 191' through 'Room 195', 'Room 196' through 'Room 200', 'Room 201' through 'Room 205', 'Room 206' through 'Room 210', 'Room 211' through 'Room 215', 'Room 216' through 'Room 220', 'Room 221' through 'Room 225', 'Room 226' through 'Room 230', 'Room 231' through 'Room 235', 'Room 236' through 'Room 240', 'Room 241' through 'Room 245', 'Room 246' through 'Room 250', 'Room 251' through 'Room 255', 'Room 256' through 'Room 260', 'Room 261' through 'Room 265', 'Room 266' through 'Room 270', 'Room 271' through 'Room 275', 'Room 276' through 'Room 280', 'Room 281' through 'Room 285', 'Room 286' through 'Room 290', 'Room 291' through 'Room 295', 'Room 296' through 'Room 300', 'Room 301' through 'Room 305', 'Room 306' through 'Room 310', 'Room 311' through 'Room 315', 'Room 316' through 'Room 320', 'Room 321' through 'Room 325', 'Room 326' through 'Room 330', 'Room 331' through 'Room 335', 'Room 336' through 'Room 340', 'Room 341' through 'Room 345', 'Room 346' through 'Room 350', 'Room 351' through 'Room 355', 'Room 356' through 'Room 360', 'Room 361' through 'Room 365', 'Room 366' through 'Room 370', 'Room 371' through 'Room 375', 'Room 376' through 'Room 380', 'Room 381' through 'Room 385', 'Room 386' through 'Room 390', 'Room 391' through 'Room 395', 'Room 396' through 'Room 400', 'Room 401' through 'Room 405', 'Room 406' through 'Room 410', 'Room 411' through 'Room 415', 'Room 416' through 'Room 420', 'Room 421' through 'Room 425', 'Room 426' through 'Room 430', 'Room 431' through 'Room 435', 'Room 436' through 'Room 440', 'Room 441' through 'Room 445', 'Room 446' through 'Room 450', 'Room 451' through 'Room 455', 'Room 456' through 'Room 460', 'Room 461' through 'Room 465', 'Room 466' through 'Room 470', 'Room 471' through 'Room 475', 'Room 476' through 'Room 480', 'Room 481' through 'Room 485', 'Room 486' through 'Room 490', 'Room 491' through 'Room 495', 'Room 496' through 'Room 500', 'Room 501' through 'Room 505', 'Room 506' through 'Room 510', 'Room 511' through 'Room 515', 'Room 516' through 'Room 520', 'Room 521' through 'Room 525', 'Room 526' through 'Room 530', 'Room 531' through 'Room 535', 'Room 536' through 'Room 540', 'Room 541' through 'Room 545', 'Room 546' through 'Room 550', 'Room 551' through 'Room 555', 'Room 556' through 'Room 560', 'Room 561' through 'Room 565', 'Room 566' through 'Room 570', 'Room 571' through 'Room 575', 'Room 576' through 'Room 580', 'Room 581' through 'Room 585', 'Room 586' through 'Room 590', 'Room 591' through 'Room 595', 'Room 596' through 'Room 600', 'Room 601' through 'Room 605', 'Room 606' through 'Room 610', 'Room 611' through 'Room 615', 'Room 616' through 'Room 620', 'Room 621' through 'Room 625', 'Room 626' through 'Room 630', 'Room 631' through 'Room 635', 'Room 636' through 'Room 640', 'Room 641' through 'Room 645', 'Room 646' through 'Room 650', 'Room 651' through 'Room 655', 'Room 656' through 'Room 660', 'Room 661' through 'Room 665', 'Room 666' through 'Room 670', 'Room 671' through 'Room 675', 'Room 676' through 'Room 680', 'Room 681' through 'Room 685', 'Room 686' through 'Room 690', 'Room 691' through 'Room 695', 'Room 696' through 'Room 700', 'Room 701' through 'Room 705', 'Room 706' through 'Room 710', 'Room 711' through 'Room 715', 'Room 716' through 'Room 720', 'Room 721' through 'Room 725', 'Room 726' through 'Room 730', 'Room 731' through 'Room 735', 'Room 736' through 'Room 740', 'Room 741' through 'Room 745', 'Room 746' through 'Room 750', 'Room 751' through 'Room 755', 'Room 756' through 'Room 760', 'Room 761' through 'Room 765', 'Room 766' through 'Room 770', 'Room 771' through 'Room 775', 'Room 776' through 'Room 780', 'Room 781' through 'Room 785', 'Room 786' through 'Room 790', 'Room 791' through 'Room 795', 'Room 796' through 'Room 800', 'Room 801' through 'Room 805', 'Room 806' through 'Room 810', 'Room 811' through 'Room 815', 'Room 816' through 'Room 820', 'Room 821' through 'Room 825', 'Room 826' through 'Room 830', 'Room 831' through 'Room 835', 'Room 836' through 'Room 840', 'Room 841' through 'Room 845', 'Room 846' through 'Room 850', 'Room 851' through 'Room 855', 'Room 856' through 'Room 860', 'Room 861' through 'Room 865', 'Room 866' through 'Room 870', 'Room 871' through 'Room 875', 'Room 876' through 'Room 880', 'Room 881' through 'Room 885', 'Room 886' through 'Room 890', 'Room 891' through 'Room 895', 'Room 896' through 'Room 900', 'Room 901' through 'Room 905', 'Room 906' through 'Room 910', 'Room 911' through 'Room 915', 'Room 916' through 'Room 920', 'Room 921' through 'Room 925', 'Room 926' through 'Room 930', 'Room 931' through 'Room 935', 'Room 936' through 'Room 940', 'Room 941' through 'Room 945', 'Room 946' through 'Room 950', 'Room 951' through 'Room 955', 'Room 956' through 'Room 960', 'Room 961' through 'Room 965', 'Room 966' through 'Room 970', 'Room 971' through 'Room 975', 'Room 976' through 'Room 980', 'Room 981' through 'Room 985', 'Room 986' through 'Room 990', 'Room 991' through 'Room 995', 'Room 996' through 'Room 1000', 'Room 1001' through 'Room 1005', 'Room 1006' through 'Room 1010', 'Room 1011' through 'Room 1015', 'Room 1016' through 'Room 1020', 'Room 1021' through 'Room 1025', 'Room 1026' through 'Room 1030', 'Room 1031' through 'Room 1035', 'Room 1036' through 'Room 1040', 'Room 1041' through 'Room 1045', 'Room 1046' through 'Room 1050', 'Room 1051' through 'Room 1055', 'Room 1056' through 'Room 1060', 'Room 1061' through 'Room 1065', 'Room 1066' through 'Room 1070', 'Room 1071' through 'Room 1075', 'Room 1076' through 'Room 1080', 'Room 1081' through 'Room 1085', 'Room 1086' through 'Room 1090', 'Room 1091' through 'Room 1095', 'Room 1096' through 'Room 1100', 'Room 1101' through 'Room 1105', 'Room 1106' through 'Room 1110', 'Room 1111' through 'Room 1115', 'Room 1116' through 'Room 1120', 'Room 1121' through 'Room 1125', 'Room 1126' through 'Room 1130', 'Room 1131' through 'Room 1135', 'Room 1136' through 'Room 1140', 'Room 1141' through 'Room 1145', 'Room 1146' through 'Room 1150', 'Room 1151' through 'Room 1155', 'Room 1156' through 'Room 1160', 'Room 1161' through 'Room 1165', 'Room 1166' through 'Room 1170', 'Room 1171' through 'Room 1175', 'Room 1176' through 'Room 1180', 'Room 1181' through 'Room 1185', 'Room 1186' through 'Room 1190', 'Room 1191' through 'Room 1195', 'Room 1196' through 'Room 1200', 'Room 1201' through 'Room 1205', 'Room 1206' through 'Room 1210', 'Room 1211' through 'Room 1215', 'Room 1216' through 'Room 1220', 'Room 1221' through 'Room 1225', 'Room 1226' through 'Room 1230', 'Room 1231' through 'Room 1235', 'Room 1236' through 'Room 1240', 'Room 1241' through 'Room 1245', 'Room 1246' through 'Room 1250', 'Room 1251' through 'Room 1255', 'Room 1256' through 'Room 1260', 'Room 1261' through 'Room 1265', 'Room 1266' through 'Room 1270', 'Room 1271' through 'Room 1275', 'Room 1276' through 'Room 1280', 'Room 1281' through 'Room 1285', 'Room 1286' through 'Room 1290', 'Room 1291' through 'Room 1295', 'Room 1296' through 'Room 1300', 'Room 1301' through 'Room 1305', 'Room 1306' through 'Room 1310', 'Room 1311' through 'Room 1315', 'Room 1316' through 'Room 1320', 'Room 1321' through 'Room 1325', 'Room 1326' through 'Room 1330', 'Room 1331' through 'Room 1335', 'Room 1336' through 'Room 1340', 'Room 1341' through 'Room 1345', 'Room 1346' through 'Room 1350', 'Room 1351' through 'Room 1355', 'Room 1356' through 'Room 1360', 'Room 1361' through 'Room 1365', 'Room 1366' through 'Room 1370', 'Room 1371' through 'Room 1375', 'Room 1376' through 'Room 1380', 'Room 1381' through 'Room 1385', 'Room 1386' through 'Room 1390', 'Room 13

18,360 Square feet of column free space that can be halved or quartered to your specifications. Heritage Hall can accommodate 1,500 people with seating and staffing or host and elegant banquet for 800 people. Lighting and studio levels can be adjusted throughout the entire hall or differently in each section.

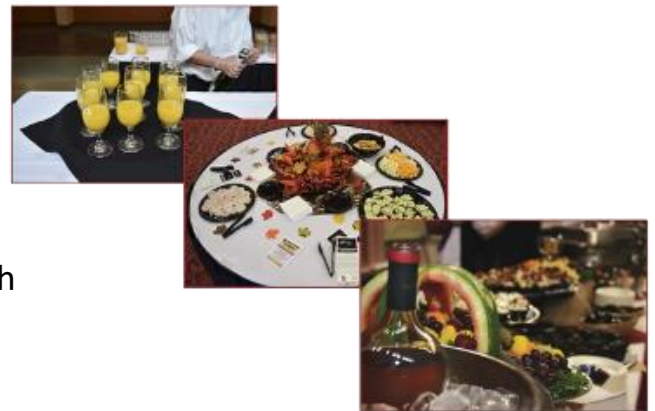
Specifications:

- Whole 120' x 153' 18,360 ft.²
- Half: 60' x 153' 9,180 ft.²
- Quarter: 60' x 76' 4,550 ft.²
- 4' x 18' Overhead Door
- 17' Ceiling Height
- 200 Amp 2 Phase 16 Series Camlock Connection
- High-Speed Wireless Internet



Catering:

Tony's Pizza Events Center offer full-service, in-house catering for groups of any size. Conferences, trade shows, wedding receptions, company holiday parties, and much more have been attended at Tony's Pizza Events Center. Buffet or plated meal service for breakfast, lunch and dinner is available.



Meeting Rooms:

Eight rooms located above the lobby at Tony's Pizza Events Center are perfect for meetings, luncheons, training sessions or seminars. The rooms can be utilized individually hosting up to 50 people in each combined to form two rooms large enough for your group of 200. Each rooms contain screens and projectors built into the ceiling. Audio and visual aids can be synced to play in each room or separately.

